



**Mikki Swisher**  
 Broker/Owner, Realtor, GRI  
 (269) 208-0133  
 (269) 468-HOME  
 mikki@mikkiswisher.com

**American Homes REAL ESTATE**

142 BADT DRIVE, COLOMA, MI 49038

**OVER 30 YEARS**  
*of experience in the local area!*

1 • Coloma • E-2

**Todd S. Korabik**  
 269-202-7159  
 todd.korabik.elxz@statefarm.com

**StateFarm**

*A good neighbor is a green neighbor.™*

20 • Coloma • E-3

269-468-2424 WWW.CCS.COLOMA.ORG

**COMET PRIDE**

Coloma Community Schools is "Building a Culture for Excellence." With a focus on early literacy at the elementary levels and opportunities for advanced placement, dual enrollment, and Career & Technical education at the secondary levels, we have the programs and resources to meet the needs of all kids. Visit our website or give us a call with any questions or to set up a time to visit. #CometPride

**Coloma Community Schools**  
*Inspire to Achieve. Empower for Success.*

6 • Coloma • F-1

*Creating Family Memories. One Camping Night at a Time*

Coloma / St. Joseph KOA Holiday  
 3527 Coloma Road  
 Benton Harbor, MI 49022  
 269.849.3333  
 www.stjosephkoa.com

**KOA HOLIDAY**

8 • Coloma • E-1

**WOODLAND TERRACE** 6786 Red Arrow Highway Coloma, MI 49038 269.468.5800

**www.woodlandterrace.com**  
 Independent & Assisted Living Apartments - Memory Care Senior Community

26 • Coloma • E-3

**NORTH BERRIEN HISTORICAL MUSEUM**  
 300 COLOMA AVENUE, COLOMA, MI 49038 • 269-468-3330  
 Tuesday - Friday: 10 - 4 | Saturday (May - August): By Appointment Only  
 www.northberrienhistory.org, info@northberrienhistory.org

13 • Coloma • E-2

**KEEP ME IN MIND** - repurposed treasures -

*If the shoe fits...*

featuring **Colletta's CLOSET**

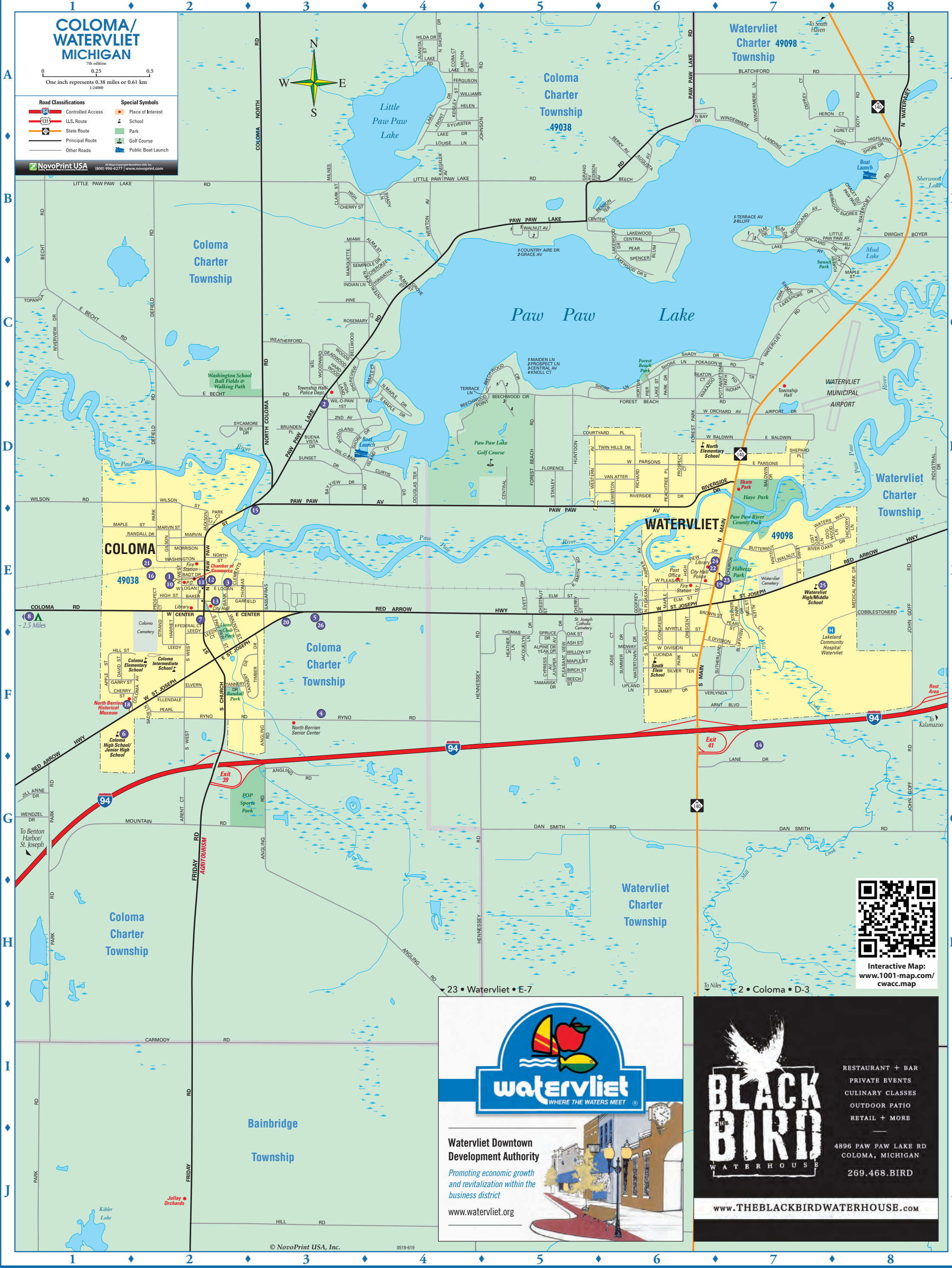
Open June - October  
 144 N. Church St • Coloma, MI

Open June - October  
 178 N Paw Paw Street  
 Coloma, MI

7 • Coloma • E-2

**Coloma United Methodist Church**

**COLOMA UNITED METHODIST CHURCH**  
 144 S. Church Street, P.O. Box 670  
 Coloma, Michigan 49038  
 Pastor Christine M. Beaudoin  
 269.468.6062 | colomaumc.org



21 • Coloma • E-2

**TEED** Heating & Cooling  
 24 hour Service  
 Family Owned and Operated

340 Washington Street • Coloma, MI  
 (269) 468-9640  
 Toll Free 888-343-4440 | teedheating@sbcglobal.net  
 www.teedheatingcooling.com

**Simplify your financial life. Let's talk.**

**Brian W Smith**  
 Financial Advisor  
 154 Badt Dr  
 P.O. Box 370  
 Coloma, MI 49038  
 269-468-4153

**Edward Jones**  
 MAKING SENSE OF INVESTING

**LANE AUTOMOTIVE**

Visit Us At Exit 41  
 Off I-94  
**269-463-LANE**  
 8300 Lane Drive Watervliet, Michigan 49098

14 • Watervliet • F-7

**Watervliet HARDWARE**

343 N. MAIN STREET - WATERVLIET, MI 49098  
 - 269.463.5461 -  
 Bryan & Jan Conrad, Owners

24 • Watervliet • E-6

**BOSS SERVICES** HEATING COOLING PLUMBING ELECTRICAL

HOUSE CLEANING - HOME INSPECTIONS  
 REPAIRS - MAINTENANCE  
 AND MORE...

(269)468-6682 theBOSSservices.com

3 • Coloma • E-2

**Mattson's**  
 HOUSE OF DECOR

*A unique store with a great mix of new and repurposed one of a kind treasures for your home and garden. Featuring Lake Cottage décor including Paw Paw Lake apparel and merchandise. Whether you're looking for that special gift or something just for you, it's well worth the visit. We also offer free in-home estimates on custom window treatments.*

OPEN - Monday thru Saturday  
 Sunday Seasonal - Appointments anytime.  
 6472 Paw Paw Avenue • Coloma, MI 49038  
 269-468-7953

15 • Coloma • E-3

**COLOMA WATERVLIET AREA CHAMBER OF COMMERCE**

142 Badt Drive  
 Coloma, MI 49038  
 269.468.4430  
 www.coloma-watervliet.org

**Watervliet Public Schools**  
 Phone Number: 269.463.0300  
 Website: www.watervlietps.org

*"Working Together to Keep us Together"*

25 • Watervliet • E-7

**CENTSIBLE**  
 HEATING & AIR CONDITIONING

6740 RED ARROW HIGHWAY • COLOMA, MI 49038  
 (269) 468-6001 • WWW.CENTSIBLEMICHIGAN.COM

5 • Coloma • E-3

**Watervliet District Library**  
 Connects People, Inspires Ideas, and Transforms Lives

info@wdlib.org  
 www.watervlietlibrary.net  
 269-463-6382

333 N Main Street  
 Watervliet, MI 49098

22 • Watervliet • E-6

**COLOMA WATERVLIET • MI**

View this publication online - at any time!

1. Download any QR Code reader to your smartphone
2. Scan the code
3. Go directly to the online version of this map

**ROBERT MICHAEL**  
 FAMILY SALON & SPA

*Do What You Love*

• Like us on Facebook •  
 324 N. Main Street - Watervliet, MI 49098 - 269.463.3200

19 • Watervliet • E-7

*Welcome to*  
**The Friendly Tavern**  
 Food & Splits

TAKE OUT ORDERS WELCOME

BANQUET FACILITIES AVAILABLE

Find us on Facebook

*Our friendly staff invites you to enjoy a wonderful dining experience!*  
 206 N. PAW PAW LAKE ROAD | COLOMA, MI 49038 | 269.468.3037

11 • Coloma • E-2

**PARKS AND NATURE**

**PAW PAW RIVER COUNTY PARK** 650 N. Main Street • Watervliet, Michigan

Approximately 14 acres of wilderness and peaceful tranquility near downtown Watervliet. The Park is designed for people of all abilities and encourages the public to experience a natural river area in a beautiful Southwest Michigan setting. Paw Paw River County Park is open daily, from dawn until dusk and will be closed in the winter months due to safety issues with snow and ice.

**PARK FEATURES**

- Circular Drive and Ample Parking
- Hard Surface Hiking Trails
- Overlook Decks for River & Wildlife Viewing
- Bridge to the Island
- Barrier Free Kayak Launch
- Fishing Access

**PAW PAW RIVER WATER TRIAL** www.pawpawriverwatertrail.com

The Paw Paw River Water Trail is a beautiful small river in Southwest Michigan providing a wide variety of exceptional paddling experiences along the 66 miles between the Village of Paw Paw and Benton Harbor/St. Joseph. There are excellent wildlife viewing opportunities all along the river as it flows through an extensive and undeveloped floodplain forest corridor, making it one of the region's most important natural areas. Please always wear your life jacket. Visit the website for more information on the Paw Paw River Water Trail.

**RANDALL PARK** S. Church Street & Tannery Drive • Coloma, Michigan

The hand built wooden play structures provide a wonderful place for children to play and use their imagination. The park has a paved walking trail, flowering trees, grassy area, benches, pavilion and picnic tables. Recently updated the park has playground equipment for all ages of children. Open all year.

**HAYS PARK** N. Main Street • Watervliet, Michigan

Ballpark skate park, canoe launch, walking trails, river fishing, batting cages, picnic area and pavilion. Snack bar during baseball games, playground for small children and sledding in the winter.