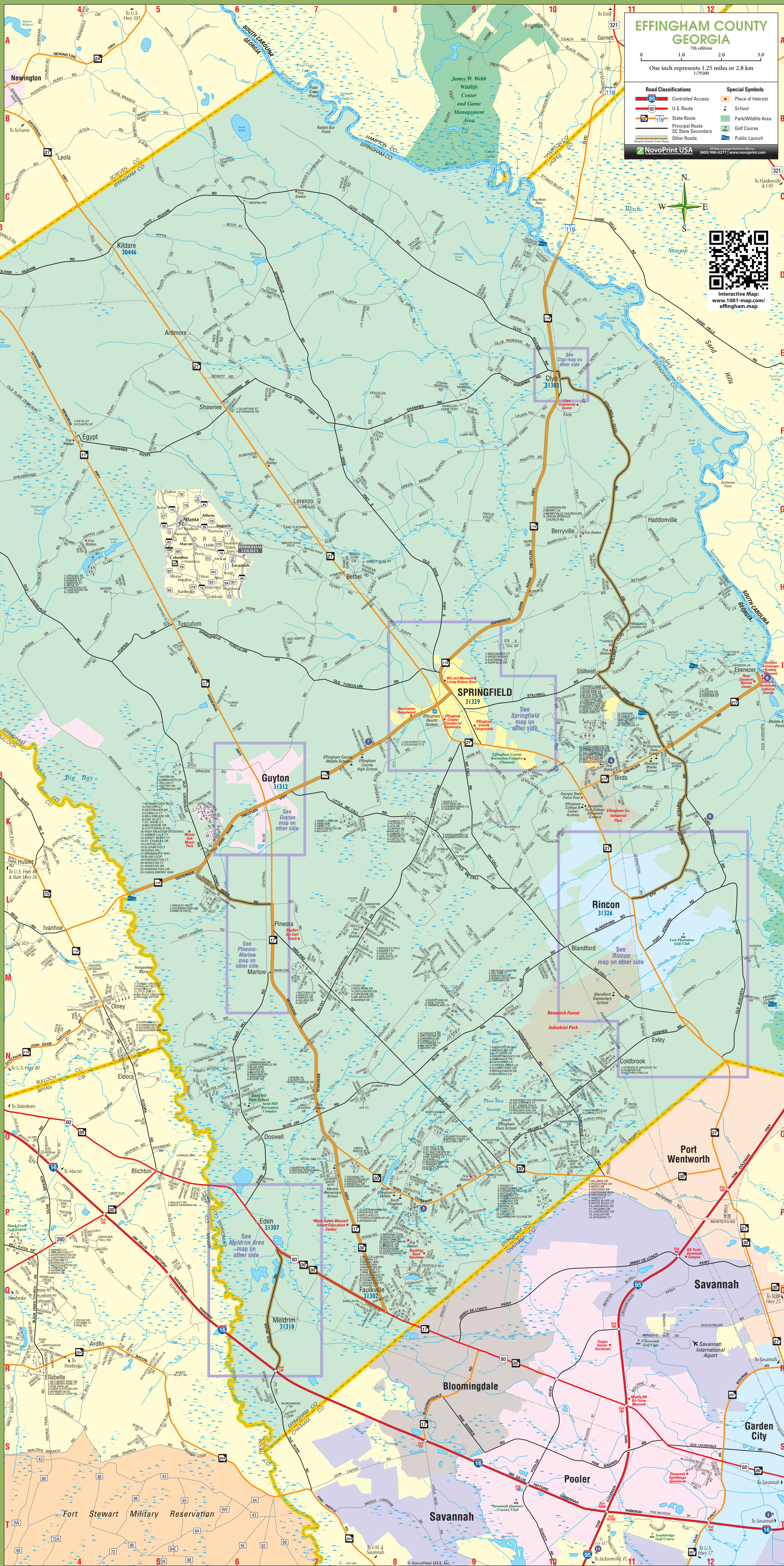


Welcome to

EFFINGHAM COUNTY GEORGIA



Shop Local
Purchasing from local merchants and service providers helps Effingham County thrive and provides resources, like this map.



Index to Effingham County Roads

| Route | Start | End | Notes |
|-------|-------|-----|-------|
| 101 | ... | ... | ... |
| 102 | ... | ... | ... |
| 103 | ... | ... | ... |
| 104 | ... | ... | ... |
| 105 | ... | ... | ... |
| 106 | ... | ... | ... |
| 107 | ... | ... | ... |
| 108 | ... | ... | ... |
| 109 | ... | ... | ... |
| 110 | ... | ... | ... |
| 111 | ... | ... | ... |
| 112 | ... | ... | ... |
| 113 | ... | ... | ... |
| 114 | ... | ... | ... |
| 115 | ... | ... | ... |
| 116 | ... | ... | ... |
| 117 | ... | ... | ... |
| 118 | ... | ... | ... |
| 119 | ... | ... | ... |
| 120 | ... | ... | ... |
| 121 | ... | ... | ... |
| 122 | ... | ... | ... |
| 123 | ... | ... | ... |
| 124 | ... | ... | ... |
| 125 | ... | ... | ... |
| 126 | ... | ... | ... |
| 127 | ... | ... | ... |
| 128 | ... | ... | ... |
| 129 | ... | ... | ... |
| 130 | ... | ... | ... |
| 131 | ... | ... | ... |
| 132 | ... | ... | ... |
| 133 | ... | ... | ... |
| 134 | ... | ... | ... |
| 135 | ... | ... | ... |
| 136 | ... | ... | ... |
| 137 | ... | ... | ... |
| 138 | ... | ... | ... |
| 139 | ... | ... | ... |
| 140 | ... | ... | ... |
| 141 | ... | ... | ... |
| 142 | ... | ... | ... |
| 143 | ... | ... | ... |
| 144 | ... | ... | ... |
| 145 | ... | ... | ... |
| 146 | ... | ... | ... |
| 147 | ... | ... | ... |
| 148 | ... | ... | ... |
| 149 | ... | ... | ... |
| 150 | ... | ... | ... |



HISTORY

Effingham County is one of the Southeast's oldest communities. In our area you will find a unique blend of hometown hospitality, rich regional history, outdoor recreation and modern day convenience.

On the banks of the Savannah River, the township of New Ebenezer was founded in 1736 by Lutheran exiles seeking a place of religious freedom. Historic Jerusalem Lutheran Church was completed in 1769, and is still in use today, holding the title of the oldest Lutheran church in America with a continuously active congregation. Ebenezer was once the state capital of Georgia and John A. Treutlen, a member of the Jerusalem congregation, was the first Constitutional Governor of Georgia. Touring the Salzburger townsite of New Ebenezer, visitors may see the heritage museum and Loest Research Library containing ancestral records dating back to the Colonial era.

If time and weather permit, boating Ebenezer Creek is a great way to pass a relaxing afternoon. This scenic black water creek flows through Effingham County and connects to the Savannah River at the historic settlement at Ebenezer Lined with Cypress and Tupelo trees, it is ideal for scenic canoeing and kayaking. Multiple access points allow for easy short trips along the creek, or longer full-day paddles. Sign up for a guided creek tour and learn about the Indian settlers of Effingham County, the Georgia Salzburger and their settlement of Ebenezer at the base of the creek, and the history of Old Augusta Road where Sherman's Army navigated the creek on their path to Savannah.

The county seat since 1799, the City of Springfield still has remnants of the community's traditional "square town plan" modeled after its close neighbor Savannah, Georgia. Turn of the century homes in pristine condition surround the 1908 Courthouse. In the square, you can tour the Effingham Historical Society Museum and Living History Site, see Revolutionary War, Civil War, and Native American artifacts and also learn more about Effingham County's unique heritage. While in town, take in a movie or concert at the newly restored historic Mars Theatre and view the stained glass in the Holy Trinity Lutheran Church, built in 1909.

Guyton, another of Effingham's historic railroad towns, has a picturesque Main Street and its neighborhoods are surrounded by natural wonders and a thriving history. Guyton was an affluent town in the mid 1800s, and the Confederacy built a hospital in town during the Civil War. Visitors can take in the scenery with walking trails and historic home tours. If you are lucky you can catch one of the many outdoor activities the community hosts along their main street walking trail.

For more modern amenities, travelers can visit the City of Rincon, which thrives as a vital part of Effingham County's economic growth and development. Rincon boasts a semi-private 18-hole course, an eight-field baseball complex, and many options for dining and shopping.



MARS THEATRE
520 W. THIRD STREET • SPRINGFIELD, GA 31329
(912) 754-3301 • EFFINGHAMCOUNTY.COM



Index to Effingham County Roads (Continued)

| Route | Start | End | Notes |
|-------|-------|-----|-------|
| 151 | ... | ... | ... |
| 152 | ... | ... | ... |
| 153 | ... | ... | ... |
| 154 | ... | ... | ... |
| 155 | ... | ... | ... |
| 156 | ... | ... | ... |
| 157 | ... | ... | ... |
| 158 | ... | ... | ... |
| 159 | ... | ... | ... |
| 160 | ... | ... | ... |
| 161 | ... | ... | ... |
| 162 | ... | ... | ... |
| 163 | ... | ... | ... |
| 164 | ... | ... | ... |
| 165 | ... | ... | ... |
| 166 | ... | ... | ... |
| 167 | ... | ... | ... |
| 168 | ... | ... | ... |
| 169 | ... | ... | ... |
| 170 | ... | ... | ... |
| 171 | ... | ... | ... |
| 172 | ... | ... | ... |
| 173 | ... | ... | ... |
| 174 | ... | ... | ... |
| 175 | ... | ... | ... |
| 176 | ... | ... | ... |
| 177 | ... | ... | ... |
| 178 | ... | ... | ... |
| 179 | ... | ... | ... |
| 180 | ... | ... | ... |