

LETCORTH STATE PARK

The "Grand Canyon of the East"

Experience Letcorth

14,350 acres along the Genesee River

- Major Waterfalls
- Magnificent Overlooks
- Hiking Trails
- Camping & Cabins
- History and Performing Arts Programs
- Guided Walks and Tours
- Summer Lecture Series
- Hot Air Ballooning
- White Water Rafting
- Kayaking
- Special Family Events and More

1 Letcorth State Park • Castile, NY 14427

Call 585-493-3600 for more information and schedules

VISIT US ON FACEBOOK

WWW.NYSPARKS.COM

Starting, growing or relocating your business? We have the services you need.

- Entrepreneurship Training
- Financing
- Incentives
- Site and Building Selection

Wyomingcounty.org
Wycoida.org
Call: (716) 474-3433

Empowering people of all abilities to experience life's joys and challenges with a growing sense of personal dignity and independence.

The Arc
Livingston-Wyoming
NY, Inc.

18 Main Street, Mount Morris (585) 658-2828 www.lwarc.org

Where you camp with friends!

WYJELLYSTONE.COM • (585) 457-9644

5204 Youngers Road • North Java, NY 14113

YOG BEAR and all related characters and elements are trademarks of and © Hanna-Barbera. (S16)

ADVENTURE CALLS OUTFITTERS

WWW.ADVENTURE-CALLS.COM

- Letcorth State Park
- Class 1/11 Water is Great Family Fun!
- Roadside through the Deapest Section of the Gorge
- Early April - Late October

For More Information, Call 1-888-270-2410

CLOSE ENCOUNTERS OF THE WILD KIND

ESCAPE TO THE WILD

The adventure is closer than you think!

Wild Game Safari Tours
May - October

HiddenValleyAdventure.com
2847 Rye Road, Wyoming, NY 14187

Five Star Bank

Made for You.

Four branches serving Wyoming County

Attica • North Warsaw • Strykersville • Warsaw

Personal & Commercial Banking • Great Loan Rates • Mobile & Online

five-starbank.com • 877-226-5578

Rio GRANDE

MEXICAN RESTAURANT

425 N. MAIN STREET
WARSAW, NY 14569

585-228-1050

BUFFALO AUDUBON SOCIETY

Over 8 Miles of Nature Trails

BEAVER MEADOW AUDUBON CENTER

1610 WELCH ROAD • NORTH JAVA, NY 14113

585.457.3228 • www.buffaloudubon.org

Byrneliff

RESORT AND CONFERENCE CENTER

A great place to stay and play!

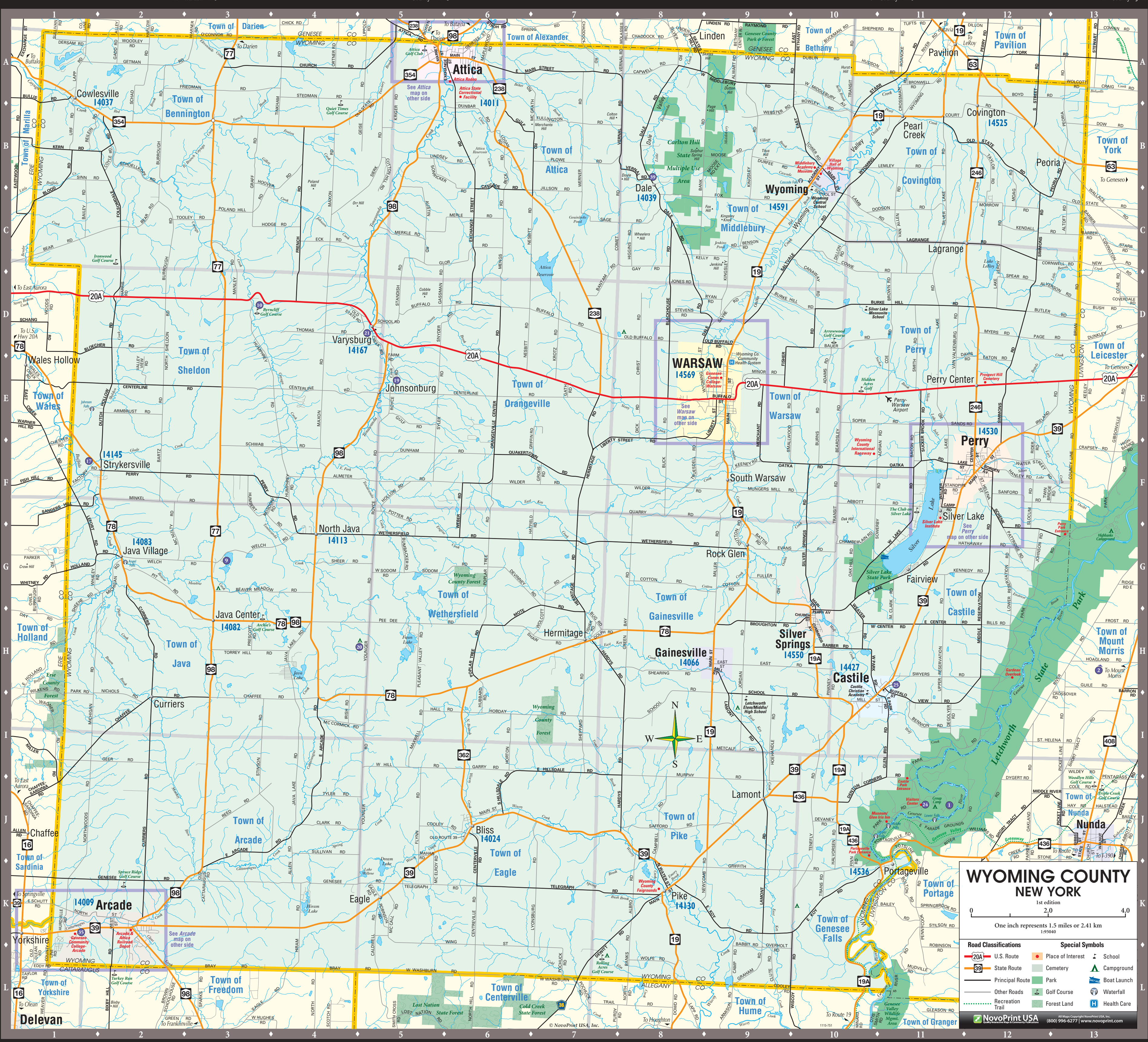
GOLF COURSE | ACCOMMODATIONS | CROSS COUNTRY SKIING

RESTAURANT & BAR | BANQUET ROOMS

585.535.7300

2357 HUMPHREY ROAD | VARYSBURG, NY 14167

WWW.BYRNCLIFF.COM



NO. ADVERTISER

- Adventure Calls Outfitters
- ARC Livingston-Wyoming, The
- Arcade & Attica Railroad, The
- Artisan Villa, The
- Asbury Camp & Retreat Center
- Attica Auto Supply & Attica Ace Hardware
- Attica Radio & Show Association
- Bull's Delicatessen
- Buffalo Audubon Society Beaver Meadow Audubon Center
- Byrneliff Resort & Conference Center
- Campuses of Perry
- Creative Food Ingredients
- Creekside Fabrics, Quilts & Yarns
- Dodd, Nelson, Wilkinson & Wojcik
- Daryl's Pizzeria
- East Hill Inn
- Five Star Bank
- Five Star Bank
- Five Star Bank
- Healing Hands
- Hidden Valley Antiquarian
- Jollystone Park of West New York
- Judi Land Draperies, Upholstery and Color Consultant
- KCS Computer Service
- Kolke-Aronson, Inc.
- Letcorth State Park
- Letcorth Valley Realty LLC
- Lumber Yard Restaurant & Party House, The
- Main Street Whiskey
- Regional Transit Service
- Rio Grande Mexican Restaurant
- Shelville Family Restaurant
- Sinclair Pharmacy
- Spruce Ridge Golf Course
- Stella Spirits & Wines
- SUNY Genesee Community College - Arcade Campus Center
- SUNY Genesee Community College - Warsaw Campus Center
- Up The Service of Attica, Inc.
- Up The Service of Attica, Inc.
- Warsaw Ace Hardware
- Warsaw Redemption Center
- WNY CJ County
- Wolken Maple Spring Products
- Wyoming County Community Health System
- Wyoming County IDA
- X-CEL Wireless

MAP • GRID

1 • County • J-11
2 • County • H-13
3 • County • K-7
4 • County • L-11
5 • County • M-11
6 • County • C-12
7 • County • E-13
8 • County • F-5
9 • County • G-3
10 • County • D-3
11 • County • F-13
12 • County • F-13
13 • County • K-7
14 • County • C-13
15 • County • F-13
16 • County • E-8
17 • County • C-12
18 • County • F-11
19 • County • A-7, F-6
20 • County • F-5
21 • County • E-5
22 • County • D-5
23 • County • D-4
24 • County • H-11
25 • County • H-11
26 • County • E-5
27 • County • K-7
28 • County • F-5
29 • County • C-6
30 • County • F-5
31 • County • F-5
32 • County • G-6
33 • County • G-6
34 • County • L-14
35 • County • D-5
36 • County • K-4
37 • County • F-5
38 • County • F-5
39 • County • B-8
40 • County • C-6
41 • County • F-5
42 • County • C-6



Founded in 1841,

the rugged adventures and simple pleasures.

Wyoming County is rich with history and is home to Letcorth State Park, "The Grand Canyon of the East" recently voted the #1 state park in America. It welcomes over 800,000 visitors from around the world each year to view its majestic natural beauty. Wyoming County represents all the best of what our unique region has to offer, from the beautiful places and pragmatic people to

Camping, hiking, world class fishing, recreational boating and sightseeing highlight some of our warm weather offerings. You can also take in the tranquility of the woods in winter, whether it be on skis, snowshoes, snowmobiles or on horseback.

Wyoming County proudly holds the designation of the largest dairy producing county in New York and is recognized as a leader in the national agricultural community. Wyoming County is also home to cutting edge agricultural technology and farming practices. Not only a leader in agriculture, the county is also the leader in the development and use of green

energy practices such as wind power and manure digesters that produce sustainable clean energy. The County is also home to over fifty outstanding manufacturers that sell their varying products worldwide including the famed Morton Salt Company located in Silver Springs.

The downtown areas of our four largest towns, Arcade, Attica, Perry and Warsaw are all alive with unique stores for you to shop in. You can find anything from apples to firewood to antiques in unexpected places along the way. We have some of the best-kept culinary secrets in Western New York in the several restaurants that can be found around the county. Because agriculture is such a dominant factor, many restaurants utilize local grown produce and goods to further enhance your dining experience. You can also experience the County's agricultural bounty by visiting a roadside farm stand, or one of our seasonal farm markets.

Local towns and villages are filled with historic sites and architecture that harkens to a bygone era, and our libraries and museums are treasure troves of information for those seeking historical information about the county. Wyoming County is also rich with arts and cultural offerings and family opportunities that all have a positive impact on the quality of life in the region.

Wyoming County is home to plenty of historic treasures and points of interest including: the only fully operational 1800's era steam locomotive that still exists in New York in the Arcade and Attica Railroad; Attica State Prison, one of the oldest operating correctional facilities in New York; the timeless gaslights in the Village of Wyoming; the historic Artisan Villa mansion, originally built by abolitionist congressman Augustus Frank; two Carnegie Libraries (Warsaw & Perry); the Seneca Indian history, Mary Jamison historic site, and the Glen Iris Inn located at Letcorth State Park. Many locations in the County were stops along the "Underground Railroad," and the earliest anti-slavery society in the U.S. was formed in Warsaw, NY in 1833.

Wyoming County welcomes you to experience all that we have to offer. We are a strong community with a proud heritage and much to share with those who come for a visit. We work hard and believe that our area is special for its people, businesses, rural landscape, and natural resources. Thank you for visiting and remember to Go Wyoming!

Go WYOMING

CHAMBER & TOURISM

(800) 839-3919

www.wycochamber.org | www.govyomingcounty.ny.com

Koike Aronson, Inc. Ransome

635 West Main Street
Arcade, New York 14009
585-492-2400
www.koike.com

A Manufacturer of high quality metal cutting, welding and positioning equipment.

A Full-Service Hospital for All Your Healthcare Needs

Wyoming County Community Health System provides you and your family the level of advanced care you'd expect from our big city hospitals, but with the personal touch that only friends and neighbors can provide. In our new facilities you'll find a broad range of services and diagnostics for comprehensive healthcare right here at home. For more information, visit us online at www.wccchs.net.

WCCHS
Wyoming County Community Health System

This institution is an equal opportunity provider and employer.
TDD: 1-800-662-1220

Services:

- Adult Day Health Care
- Behavioral Health Center
- Cardiac Care and Pulmonary Rehabilitation
- Cardiac Services
- Emergency Department
- Gastrointestinal Health & Wellness
- Health Services
- Intensive Care Unit (ICU) Laboratory
- Optical/Ophthalmology
- Orthopedics
- Otolaryngology (ENT)
- Pediatric Clinic
- Radiology
- Skilled Nursing Facility
- General Surgery Services
- Therapy and Rehabilitation
- Urology
- Women's Health and Maternity Workplace Health

www.wccchs.net • 585-786-2233
400 N. Main Street • Warsaw, NY 14569

The ARCADE & ATTICA Railroad

Step back in time aboard the last operating steam train excursion in New York state!

Runs May through January
Special events all season long!

(585) 492-3100
278 Main Street • Arcade, NY 14009

Visit our website for rates, schedules and special events calendar!
www.aarailroad.com

SILVERLAKE FAMILY RESTAURANT

Home of the Chicken Souvlaki Dinner

Open 6am - 10pm Daily TAKE OUTS

RECENTLY RENOVATED!

Breakfast all day, Specialty Sandwiches, Salad bar, Plenty of parking, Since 1991

105 West Buffalo St (Route 20 A and just off Route 19)
Warsaw, NY 14569
Tel. 585-788-5210

silverlakefamilyrestaurant.com

Artisan Villa

140 North Main Street - Warsaw, NY 14569

Augustus Frank & Smallwood-Cook House - Est. 1850
Featured on the National Historic Registry

Ash-Lin's Elegant Rose Florist & Gift Shop
(585) 786-8766

The Looking Glass Saloon
(585) 721-0135

Photography at the Villa
(585) 322-2537

Antiques
All around this historical home you will find all sorts of antiques

Timeless Tea Room
Enjoy a cup of tea from selections of organic and local teas

Sweets & Things
Locally made honey, maple syrup & chocolate are available along with many other items such as cookies, candy, coffee, snacks and Artisan Hill Winery products

Xpressions Boutique
Offering a variety of hand created jewelry, belts, scarves, purses and other accessories

Wyoming County

NEW YORK

ARCADÉ • ATTICA • BENNINGTON • CASTILE • COVINGTON • EAGLE • GAINESVILLE • GENESÉE FALLS • JAVA • MIDDLEBURY • ORANGEVILLE • PERRY • PIKE • SHELDON • WARSAW • WETHERSFIELD

WYOMING COUNTY CHAMBER & TOURISM

We are your Baked Ingredient Specialists

Creative Food Ingredients

To be a Market Leader in the supply of Baked Ingredient Products to the Food Industry through Service, Quality, Innovation and Integrity.

1.888.701.8888 | www.creativefoods.com

healing hands

massage • spa • boutique • salon

585.786.3590
46 West Buffalo St., Warsaw

www.hhmassageandspa.com

XCEL WIRELESS

(585) 786-8540

SMARTPHONES • TABLETS • WIRELESS INTERNET

429 North Main Street in Warsaw, NY

verizon

SPRUCE RIDGE GOLF COURSE

OPEN SCRAMBLE EVERY WEDNESDAY

PUBLIC WELCOME

\$300* UNLIMITED ANNUAL MEMBERSHIP

798 Genesee Road • Arcade • (585) 492-4122

www.spruceridge-gc.com

ASBURY

CAMP & RESORT CENTER

798 Genesee Road • Arcade • (585) 492-4122

www.asbury.com

Stellar Spirits & Wines

Have a Stellar Day!

248 S. Main Street • Warsaw, NY 14569 • (585) 786-8608 • (585) 356-6562

MAIN STREET WINERY

Love the Wine You're With

Ken Kibler, Owner
call (716) 560-7673

249 Main Street, Suite 2
Arcade, NY 14009

(585) 492-2739
mainstreetwinery@yahoo.com

ATTICA RODEO & SHOW ASSOCIATION

FOR MORE INFORMATION VISIT OUR WEBSITE
www.atticarodeo.com

KCS Computer Service

Computer Repair, Service & Upgrades, In-home or In-shop
Virus & Spyware Removal
New Custom Built Computers with Windows 7 Installed

Kenneth Miller, Owner
email: ken@kcscomputer.com
585-943-9786

225 Wyoming Street
Warsaw, NY 14569

Wolcott

MAPLE SYRUP PRODUCTS & EQUIPMENT

Maple Syrup, Cream, Sugar, Granulated Sugar
PERFECT NEW YORK STATE SOUVENIRS

Gift Baskets Made to Order

39 • County • B-8

WARSAW REDEMPTION CENTER

Pop, Beer, and Water • Cans and Bottles

Walk in with unsorted cans, walk out with cash!

2444 N. MAIN STREET • WARSAW, NY • 585.689.0117

EAST HILL INN

Free WiFi | Flat Screen & Refrigerators | Picnic Area with Grills | Affordable & Clean

BOOK YOUR ROOM! 585.786.2718

LOCATED AT 5584 Route 20 A East Warsaw, NY 14569

Dadd, Nelson, Wilkinson & Wujcik

A Professional Limited Liability Company
ATTORNEYS AT LAW

Established in 1938, today's Dadd, Nelson, Wilkinson & Wujcik continues to offer exceptional commercial and individual legal services.

11 Exchange Street • Attica, New York • (585) 591-1100
www.daddandnelson.com

ATTICA AUTO SUPPLY

AUTO SUPPLY (585) 591-2464

ACE HARDWARE (585) 591-0646

OUR SERVICE SETS US APART

585.493.2337

Letchworth Valley Realty LLC

We measure success one family at a time!

59 N. Main Street - Castile, NY 14427

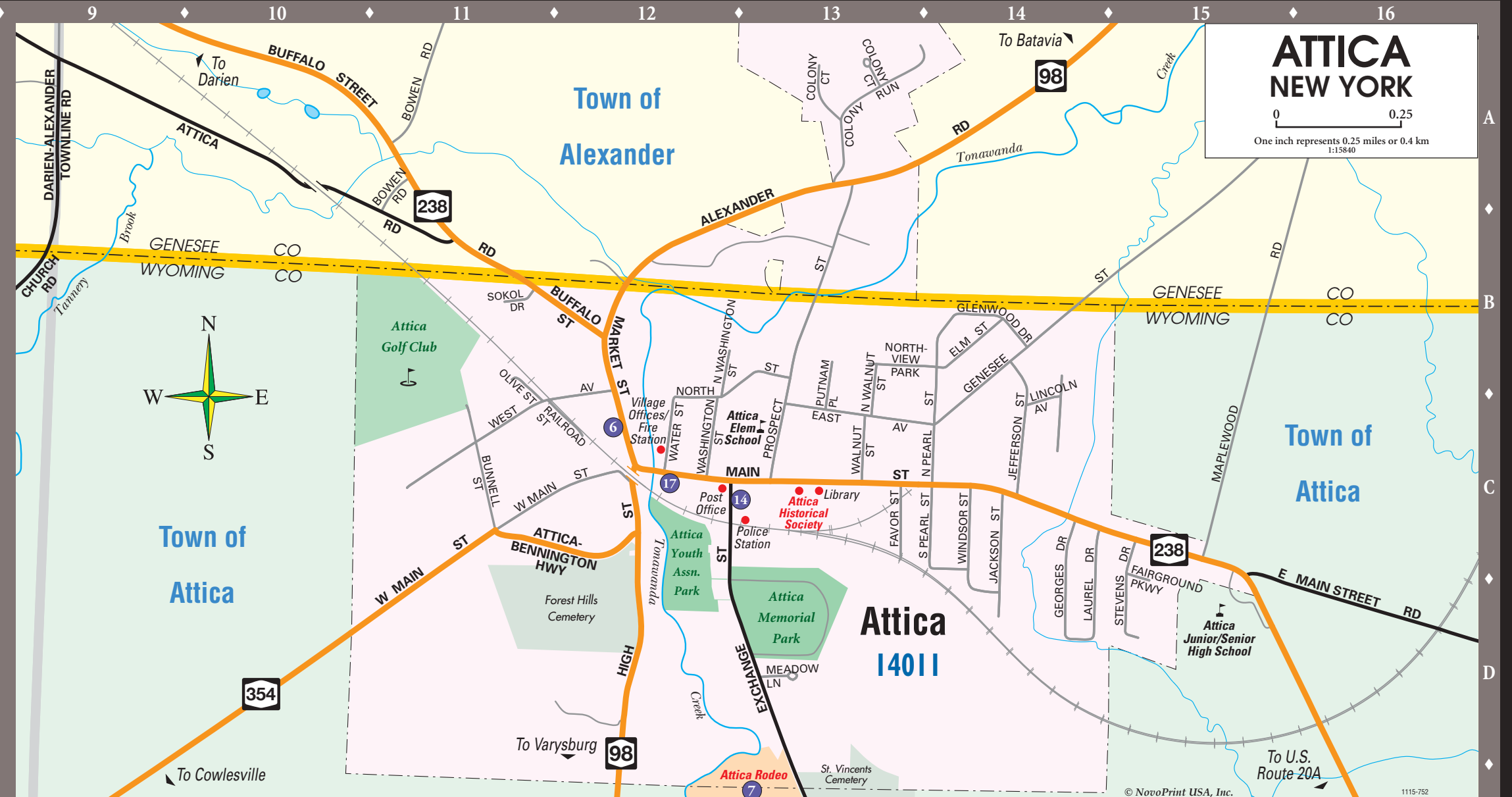
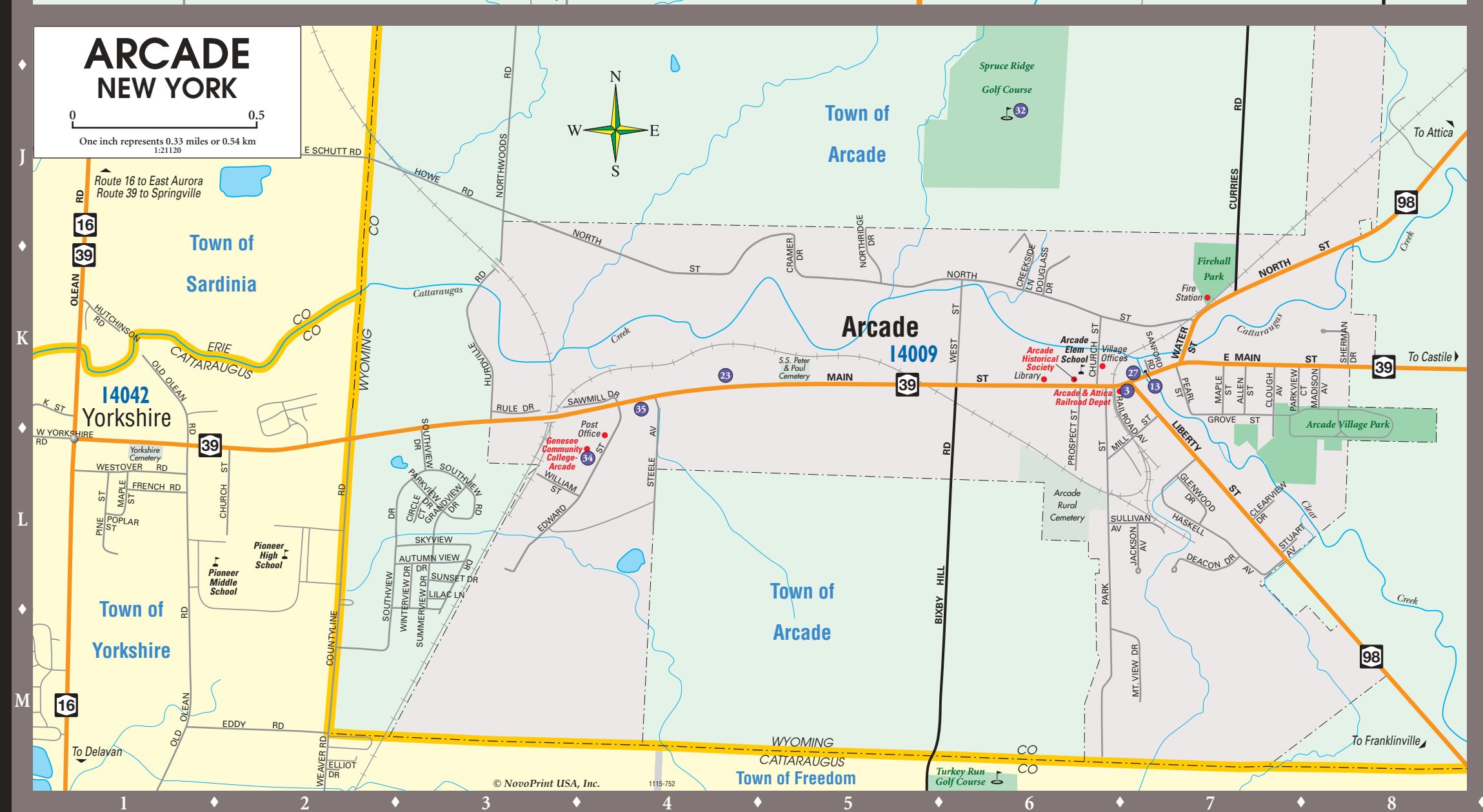
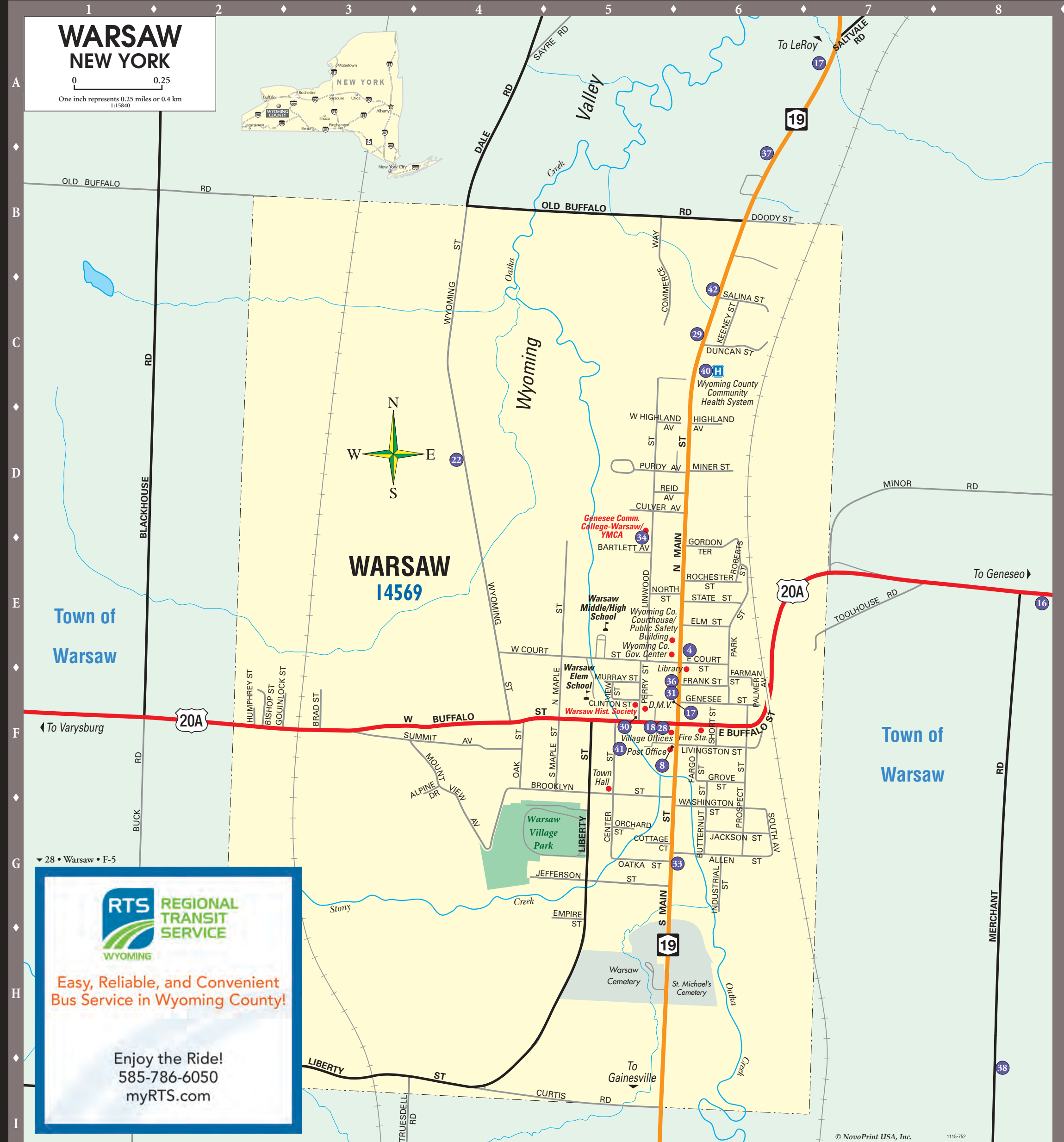
JUDI LAIRD

Draperies, Upholstery & Color Consultant

German Lace & Draperies | Solar Window Film
German Security Shutters | Custom Blinds | Shutters
Shades | Furniture Upholstery | Custom Platform Rockers

"LISTEN BEFORE WE BEGIN"

2497 ROUTE 20A (WARSAW) NY 14167 (585) 535-4010
WWW.JUDILAIRDDESIGN.COM

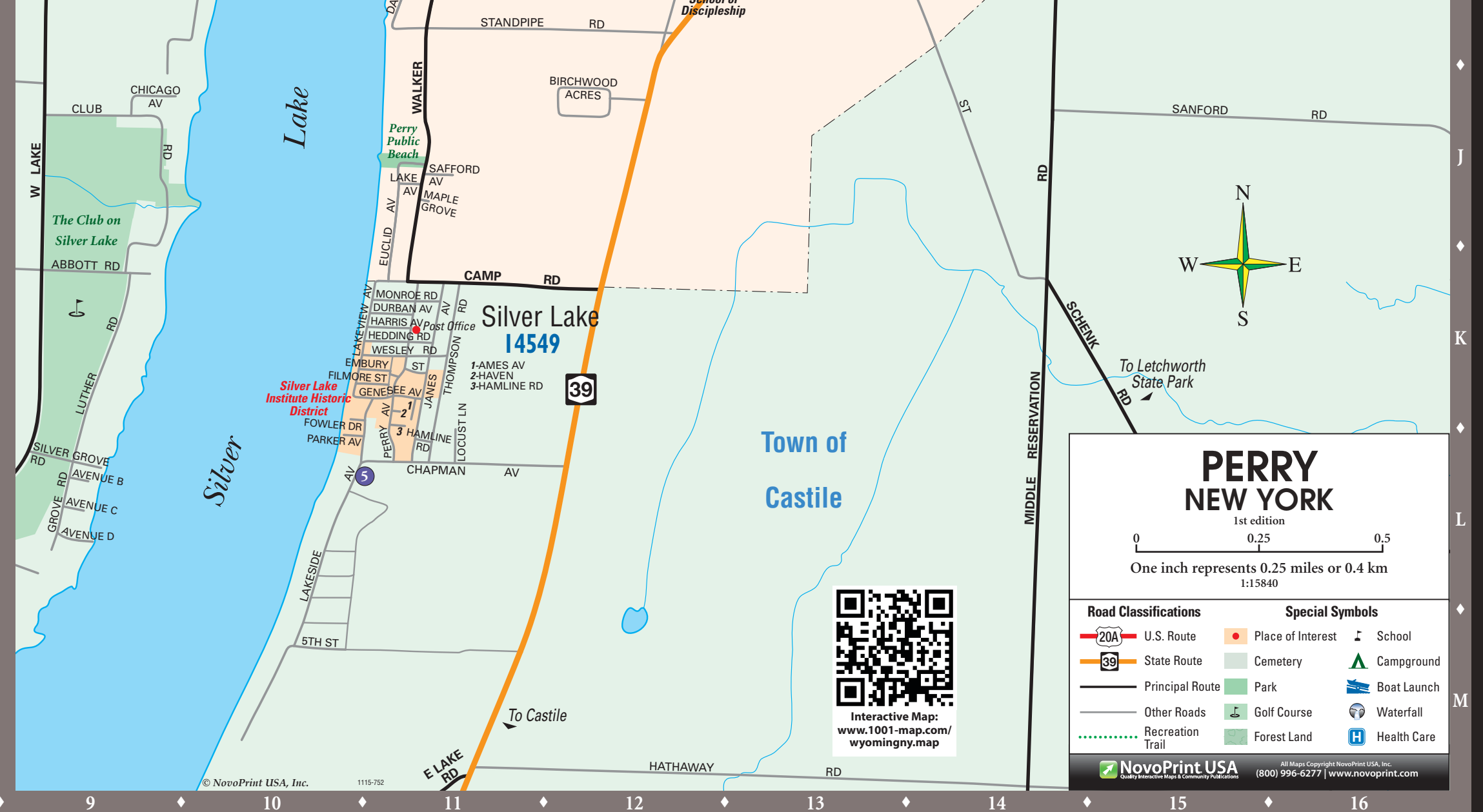


Utz Tire

Service of Arcade, Inc.

688 West Main Street
Arcade, NY 14009
(585) 492-2000

WWW.UTZTIRE.COM



Index to Arcade Streets	
Allen St.	K-7
Autumn View Dr.	L-3
Bixby Hill Rd.	L-2
Church St.	L-2
Church St.	K-6
Circle Ct.	C-13
Clearview Dr.	L-7
Clough Av.	K-7
Countyline Rd.	M2-12
Cramer Dr.	K-5
Creekside Ln.	K-6
Curries Rd.	J-7
Deacon Dr.	L-7
Douglass Dr.	K-6
Eddy Rd.	M-2
Elliot Dr.	M-2
French Rd.	M-2
Glenwood Dr.	L-7
Grandview Dr.	L-3
Grove St.	K-7
Haskell Av.	L-7
Howe Rd.	J-3
Hurdville Rd.	K-3
Hutchinson Rd.	K-1
Jackson Av.	K-1
K St.	K-1
Liberty St.	L-7
Lila Ln.	L-3
Madison Av.	D-15
Main St.	K5-K6
Main St. E.	K-7
Maple St.	K7-L1
Mill St.	L-7
Mt. View Dr.	K4-K7
North St.	K-5
Northwoods Rd.	J-3
Old Ocean Rd.	M-1
Olean Rd.	K1-J1
Park St.	L-6
Parkview Ct.	K-7
Parkview Dr.	K-7
Pearl St.	L-1
Pine St.	L-1
Poplar St.	L-1
Prospect St.	L-6
Railroad Av.	K-7
Sanford Rd.	K-7
Sawmill Dr.	K-7
Schutt Rd. E.	J-2
Sherman Dr.	K-8
Skyview Dr.	L-3
Southview Dr.	L-3
Southview Rd.	L-3
Steele Av.	L-4
Stuart Av.	L-7
Sullivan Av.	L-7
Summerview Dr.	L-3
Sunset Dr.	L-3
Water St.	K-7
Weaver Rd.	M-2
West St.	K-6
Westover Rd.	L-1
William St.	L-3
Winterview Dr.	L-3
Yorkshire Rd. W.	L-1

Index to Perry Streets	
Alpine Dr.	G-15
Bartlett Av.	E-5
Bishop St.	F-2
Blackhouse Rd.	D1-C1
Brooklyn St.	F-5
Brook Rd.	G-1
Buffalo St. E.	F-6
Buffalo St. W.	F-4
Butternut St.	G-6
Clinton St.	F-5
Commerce Way.	C5-B5
Cottage Ct.	G-5
Court St. E.	E-6
Court St. W.	E4-E5
Curtis Rd.	D-5
Dancy St.	B-6
Dundee St.	C-6
Empire St.	G-5
Fargo St.	F-6
Farman St.	F-6
Frank St.	F-6
Genesee St.	F-6
Gordon Ter.	E-6
Goulden St.	F-2
Highland Av.	F-6
Highland Av. W.	D-5
Humphrey St.	F-2
Industrial St.	G-6
Jackson St.	G-6
Jefferson St.	G-5
Keeney St.	C-6
Liberty St.	G-5
Livingston St.	F-6
Livingston St. W.	E6-E7
Main St. S.	C-5
Maple St. S.	F-5
Merchant Rd.	G8-F8
Minor Rd.	D-6
Minor Rd. E.	D7-D8
Mount View Av.	F4-G4
Murray St.	F-5
North St.	F-5
Oak St.	F-4
Orchard St.	G-5
Orchard St. W.	B1-B2, B5
Orchard St. E.	G-5
Palmer Av.	F-6
Park St. E.	F-6
Perry St.	F-5
Perry St. W.	G-6
Purdy Av.	D-5
Reid Av.	D-5
Roberts St.	E-6
Robertson St.	E-6
Salina St.	C-6
Salvatore Rd.	A-7
Sayre Rd.	A4-A5
Short St.	F-6
South Av.	G-6
State St.	E-6
Summit Av.	F-4
Toolhouse Rd.	E-7
Truedell Rd.	L-3
Washington St.	G-6
Washington St. G.	G-6
Washington St. W.	C4-E4
Wesley Rd.	K-11

Places of Interest	
Attica Elementary School	C-13
Attica Golf Club	B-11
Attica Historical Society	C-13
Attica Junior High School	D-13
Attica Memorial Park	D-13
Attica Rodeo	E-13
Attica Senior High School	D-15
Attica Youth Association Park	C-12
Forest Hills Cemetery	D-12
Glenwood Cemetery	C-13
Sherman Park	D-13
Police Station	C-13
Post Office	C-12
St. Vincent's Cemetery	E-13
Village Offices	C-12
St. Helena St.	H14-H14
Stanton Park	G-13
Standpipe Rd.	H11-H12
Stanton Av.	M-10
Sacker Brook Rd.	G-9
Salina St.	C-6
Tempest St.	H-12
Thompson Rd.	K-11
Tuna St.	L-13
Walker Rd.	J11-H11
Walnut St.	H-14
Washington Blvd.	H9-G9
Washington Pkwy.	H-12
Water St.	H14-G15
Water Street Rd.	J-12
Watkins Av.	H-14
Watrous St.	G13-G14
Watrous St. W.	H12-G12
Callahan St.	J-14
Camp Rd.	K-11
Center St. N.	G13-F13
Center St. S.	H-13
Chapman Av.	L-11
Cherry St.	G-13
Chestnut St.	H-12
Chicago Av.	J-9
Church St.	G-14
Clark St.	G-14
Club Rd.	L-2
Complet St.	L-12
Covington St.	G13-H13
Crane Pl.	G-15
Darbar Av.	K-11
Dolbeer St.	H-13
Embury St.	K-11
Euclid Av.	K11-J11
Federal St. N.	H-13
Federal St. S.	J-12
Filmore St.	K-11
Fowler Dr.	K-10
Fruit St.	G-15
Fruit St. Trail	H14-H14
Gardeau Rd.	H14-H14
Gardeau St.	H-14
Genesee Av.	K-11
Barney Kalise Park	H-15
Club on Silver Lake, The	J-9
College-Warsaw	D-5
Library	F-6
Post Office	F-5
Pioneer Middle School	F-5
Perry Elementary School	F-5
Perry Public Beach	F-13
Perry Rotary Splash Pad	H-12
Silver Lake Institute	H14, K11
Silver Lake Outlet State WMA	H-10
Silver Lake Trail	H11-H12
St. Joseph's Cemetery	H-11
Town Hall	H-13
Town of Perry Cemetery	H-14
Village Hall	H-14
Village Park	G-12
Government Center	E-5
Wyoming County	E-5
Wyoming County Public Safety Building	E-5
Y.M.C.A.	D-5

GCC is SO MUCH MORE!

60+ Academic Programs/Online Courses & Degrees
Affordable Tuition/Scholarships
7 SUNY Campus Locations including:

Arcade Campus Center | Warsaw Campus Center
25 Edward St. | 115 Linwood Ave. | 786-3010

genesee.edu

Creekside Fabrics & Yarns

Inspired to Create at Creekside Fabrics, Quilts & Yarns

237 MAIN STREET • ARCADE, NY 14009 • 585.492.4226

www.creeksidefabrics.com

CJ Today's Favorites & Legends Country

18 South Federal Street
Perry, NY 14530
(585) 237-3160

YOUR PRIME RIB, STEAK AND SEAFOOD DESTINATION

Casual, family-oriented fine dining

100.9 • 103.7 • 104.3 • 104.9 • 105.5

THE LUMBER YARD

18 South Federal Street
Perry, NY 14530
(585) 237-3160

YOUR PRIME RIB, STEAK AND SEAFOOD DESTINATION

Casual, family-oriented fine dining

Perry's Finest Pizzeria

163 South Main Street
Perry, New York 14530
(585) 237-2113

DELIVERY AVAILABLE 7 DAYS A WEEK

BUDS DELICATESSEN

Daily Specials • Subs & Sandwiches • Homemade Salads

45 S. Main Street • Warsaw, NY 585-786-5194

51 • Warsaw • F-5

SINCLAIR PHARMACY

Hallmark Cards and Gifts
Prescription Compounding
Save time... call ahead for refills!

J. Rutowski, R.Ph.
75 North Main Street
Warsaw, New York 14569
Ph: 786-2330 / Fax: 786-2767

Hours:
Mon. - Fri. 9 am to 9 pm
Sat. 9 am to 4:30 pm
Sun. 9 am to 1 pm